



ABF - automated board feeding system

:Anapurna M2050+ABF

**A top quality wide format uv inkjet printer
for indoor and outdoor applications.**

**ABF is an optional automated board
feeding system for continuous throughput.**

AGFA 

STAY AHEAD. WITH AGFA GRAPHICS.

•Anapurna M2050

Anapurna M2050 is a high-speed UV curable inkjet system for graphic screen printers, photo shops and sign shops. It is a heavy-duty, turnkey and complete industrial UV inkjet system. It is designed to produce outdoor and indoor top quality wide format jobs in any 'print for pay' industry environment, on a wide range of rigid and roll-to-roll media.

Speed is key.

The system is capable of producing output in the six colour mode at top throughput speed of 53 m²/h. At that speed you will be able to maintain a high print production on all your substrates, satisfying your most demanding customers.

White is beautiful.

The Anapurna M2050 has white ink on-board. White is ideal to print on coloured or dark substrates. It also creates possibilities for printing on transparent material for backlit or backlit/frontlit applications or simply as a white spot colour. You might even consider printing images on dark substrates using white ink only.

Stand out and let Anapurna M2050 differentiate your decoration and communication jobs.

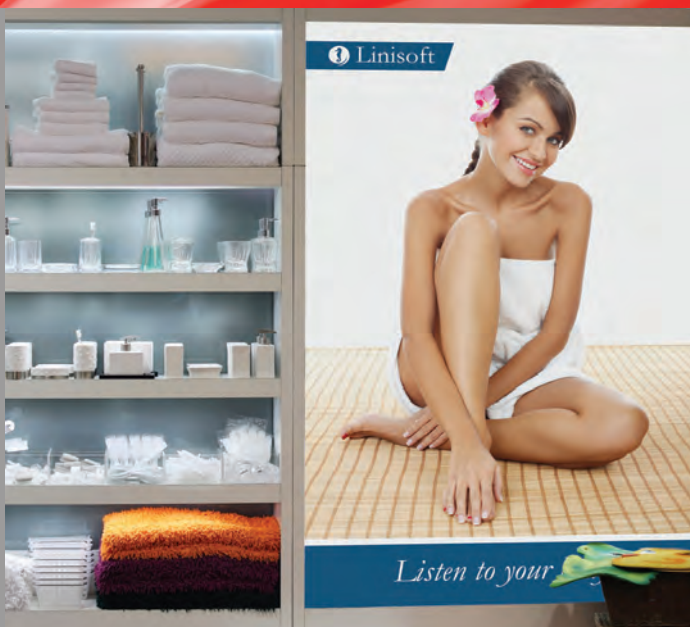
Anapurna M2050 white ink system is reliable.

Anapurna M2050 has a fully separated white ink management system. This printer has a separate circulation system, separate under-pressure-regulation and a separate cleaning circuit. The white ink tank is equipped with a stirring mechanism to keep the ink properly mixed at all times. And... pre-or post-white can be done in one production run.

Print quality. And it shows!

The eight 12 picolitre heads guarantee printing of good solids, fine text reproduction of up to 6 pt, good tonal rendering and low ink consumption. Next to the 8 (CMYK Lc Lm, 2 x white) print heads this system features a robust and industrial engineered concept, fit for sustained higher work loads.

The 1024 nozzles produce top quality prints at 720 x 1440 dpi on uncoated rigid media, up to 4,5 cm thick.



In-store communication - Backlit



In-house decoration - Dibond



In-house decoration - Essense paper



Outdoor communication - Banner

+ ABF

Hi-tech vacuum system with 4 switchables zones

Anapurna M2050's automatic vacuum system delivers an equal vacuum and only on that part of the printer bed where the media is being transported whether printing roll or rigid materials. This ensures flawless media transport, giving accurate print results at all times!

Shuttle safety

Anapurna M2050 holds a set of shuttle safety sensors to prevent printheads from touching the substrate.

Flawless media handling and perfect droplet control

Media loading is very straightforward with automated features such as the **media registration bar** and **head height adjustment**. An **ionizer bar** sees to it that there are no electro-static loads on the substrate, ensuring optimum ink droplet control and therefore delivering the highest print quality.

Multiple board or borderless

Multiple board printing is possible to maximise your productivity even more. The borderless printing feature makes post-finishing superfluous. Since UV-pints are immediately dry you can use a borderless print immediately as the final product.

Ink to print.

The "Agfa Graphics-made" Anapurna UV-curable inks provide a large colour gamut, high colour vibrancy and, thanks to good ink adhesion, high image longevity and outdoor resistance. Maintenance of the Anapurna M2050 is easy and during production the ink levels are monitored by the automatic ink refill system.

Possibilities galore!

Therefore Anapurna M2050 delivers exceptional print quality on a wide variety of indoor and outdoor media on uncoated rigid media, such as plexi glass, glass, mirrors, corrugated boards, rigid plastics, exhibition panels, stage graphics and advertising panels, as well as roll media such as film, vinyl and paper, canvas and banners up to 4,5 cm thick.

Automated Board Feeding (ABF) system

ABF is an automation system that lets you position the next set of rigid boards whilst you are still printing the previous job. It can be installed on an existing Anapurna M2050. The ABF module has straightforward status indicators informing you about the feeding process. You can prepare and print 4 boards at a time and the system can accommodate up to 8 different board sizes. ABF will boost your productivity depending on board size and speed-quality modes (a 20 to 25 % production throughput increase is quite common for 4board printing in production mode). You will now be able to satisfy your customers faster than before; and all with the same quality and versatility that the Anapurna range is famous for.



Indoor communication - Forex



Automated Board Feeding (ABF) system





ABF system register pins and pressure rollers



ABF system for multiple boards

•Anapurna M2050+ABF

ENGINE FEATURES

- Reinforced beam
- Automated Media Positioning bar for registration of rigids
- Divided vacuum table, 4 parts
- 1,5 kW ring blower for strong vacuum situated in the engine for less noise
- Accurate Media transport/feed
- Powerfull fastcan motor
- Automatic control of vacuum strength
- Ionisation bar removes electrostatic loads on media
- Shuttle safety sensors on each side of the carriage
- Extended basic frame, to support ring blower
- Black coloured media transport belt
- Network and USB (2) connection
- On-board controller with touchscreen

APPLICATIONS

- Banners, Posters, Exhibition graphics, POP, Mock-ups, Backlit, Frontlit, Self adhesives (Labels)
- Niche application: DVD printing, wood, Art reproductions, personalised object printing (mouse mats), gadgets,...
- Architectural and Interior decoration, ceramics

SUBSTRATE FLEXIBILITY

- Up to 207 cm media width
- Up to 205 cm print width
- Borderless printing - Up to 199 cm media width
- Dual board printing - Min.size: A2, landscape
- Media thickness up to 45 mm
- Media weight up to 10 kg/m²
- 4 rigid tables (2 rear & 2 front)
Extends max length 3.2 m
- Roll-to-Roll Max. roll weight: 50 kg
 Max. roll diameter: 36 cm

COLOR GAMUT

- Capable of reproducing ISO 12647 in Poster (4pass Double Strike) and Photo (8 pass)

TEXT QUALITY

- Positive: 4 point
- Negative: 6 point



IMAGE QUALITY - PRODUCTIVITY

- Uniform gloss
- Express mode @ 53 m²/h
- Production @ 32 m²/h
- Poster @ 18 m²/h
- Photo @ 9 m²/h

INKS

7 :Anapurna M G2 UV curable inks
(CMYKcLm and White)

HEADS

- 6 Konica-Minolta: 1024 nozzles/head with a droplet volume of 12pl (colours)
- 2 Konica-Minolta: 42pl (white in line)

DIMENSIONS

4350 (W) x 1600 (H) x 1470 (D) mm

WEIGHT

1800 KG

ELECTRICITY

- 380V - 415 V 3-phase star connection with Neutral wire (3x 30A*) 50 Hz
- 208V - 240V 3-phase delta connection without Neutral wire (3x 30A*) 60 Hz

SYSTEM INTEGRATION

RIP

- Integrated production solution with Asanti, Wasatch or ErgoSoft RIP Agfa Edition available
- Ready to use :Anapurna M2050 media/ink profiles available

ANAPURNA M2050 AUTOMATED BOARD FEEDER

- Max working width 1040 - 1095 mm (80")
- Maximum speed adjusts to the max printer speed
- Media specifications Minimum board thickness 2 mm
Max board thickness 45 mm
Max. weight 10 kg/m²
Max. rigid weight 60 kg
- Media loading up to 4 boards at the same time
8 different board sizes
retractable registration pins
- Media alignment +/- 0,5 mm
- Tables In-feed table with guidance
Output support
- Voltage 230-240 V - 50/60 Hz 5A